

# Q-Solar™

Q-Solar™ Beats the Daylight out of Sunlight.

## SMALL DISPLAY FAMILY

For high performance display technology that can stand up to the brightest sunlight conditions...look no further. Introducing Q-Solar™. A family of sunlight readable displays from Q-Vio, ranging in size from 5.6" to 20.1". Q-Solar beats the daylight out of sunlight with ultra bright, easy-to-read displays, even in direct sunlight. Modified in a Class 1000 clean-room, these low power, RoHS compliant LED backlit displays offer superior uniformity and outstanding thermal management for fan-less operation.

The Q-Solar Small Size display family consists of three panels: A 5.6" WXGA at 800 Nits, a 7" WVGA at 1300 Nits, and a 8.9" WXGA at 1000 Nits.

Maintaining the original factory display dimensions, Q-Vio offers an easy upgrade path to sunlight readability. These low power displays are perfect for a wide range of applications where size, weight, power and sharp readability in bright sunlight conditions are essential. Digital AV products, Broadcast Monitors, Ultra-Mobile PCs, Medical Instrumentation, Industrial Monitors and Military Displays are just a few of the many applications that can benefit from the power and brightness of Q-Solar displays.

Q-Vio has also developed a RoHS compliant LED driver board specifically designed to power up the Q-Solar series of sunlight readable displays. Our wide dimming range offers a stable, uniform brightness from the extreme low end through true sunlight readable levels.



- High Brightness
- Wide Viewing Angle
- High Contrast Ratio
- Low Power LED Backlight Unit
- Wide Temp Range
- LVDS Video Input

[www.q-vio.com](http://www.q-vio.com)

**Q-Vio™**  
Technology within reach.

# Q-SOLAR SMALL DISPLAY FAMILY

**5.6"**  
**WXGA**

PN#: QC056WXS8L-00-00  
WXGA resolution (1280 x 800)  
800 NIT Brightness (typical)  
500: 1 contrast

2.8W power  
85-85-85-85 deg. viewing cone  
0 to +60C operating temp

**7"**  
**WVGA**

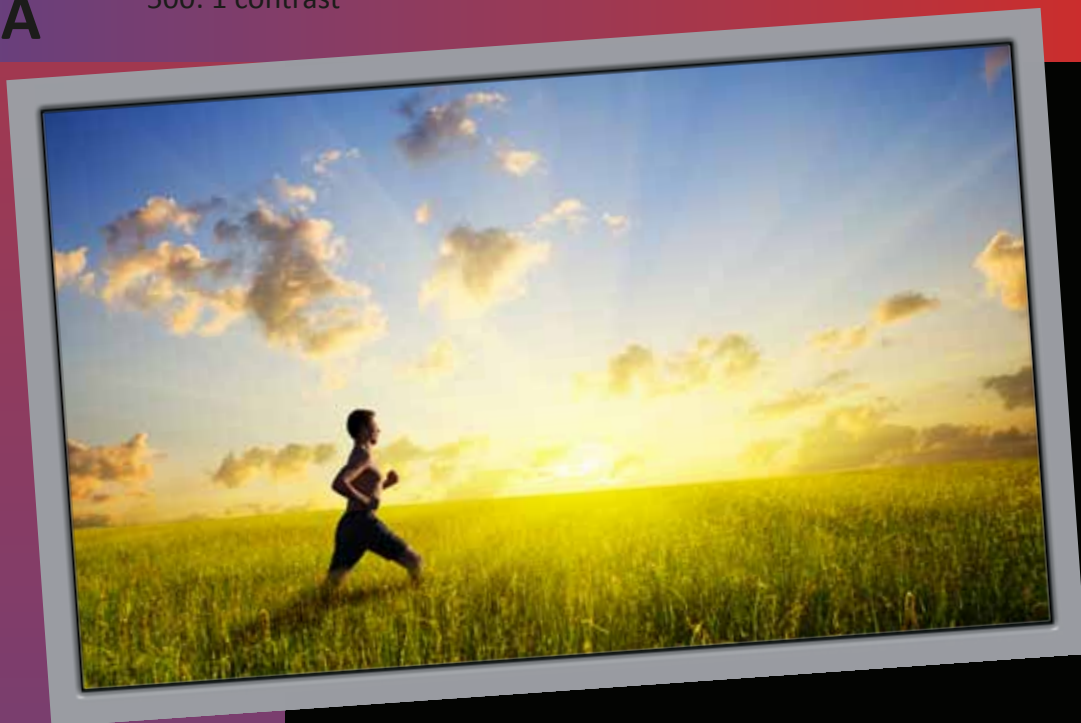
PN#: QJ070WVI13L-AG-00  
WVGA resolution (800 x 480)  
1300 NIT Brightness (typical)  
700: 1 contrast

8 bit color  
2.8W power  
70-70-70-70 deg. viewing cone  
-20 to +80C operating temp

**8.9"**  
**WXGA**

PN#: QC089WXS10L-00-00  
WXGA resolution (1280 x 800)  
1000 NIT Brightness (typical)  
500: 1 contrast

5W power  
89-89-89-89 deg. viewing cone  
0 to +50C operating temp



Note: For additional panel sizes and resolutions not listed, contact us to develop a solution for your specific application.